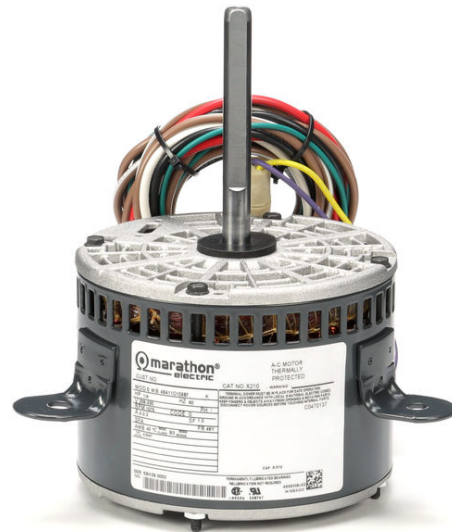


# PRODUCT INFORMATION PACKET

Model No: 048A11O1068

Catalog No: X210

0.25 HP 2 speed Definite Purpose AC Motor, 1 phase, 1200/1200 RPM, 208-230 V, 48Y Frame, OPAO  
Other Purpose Motors



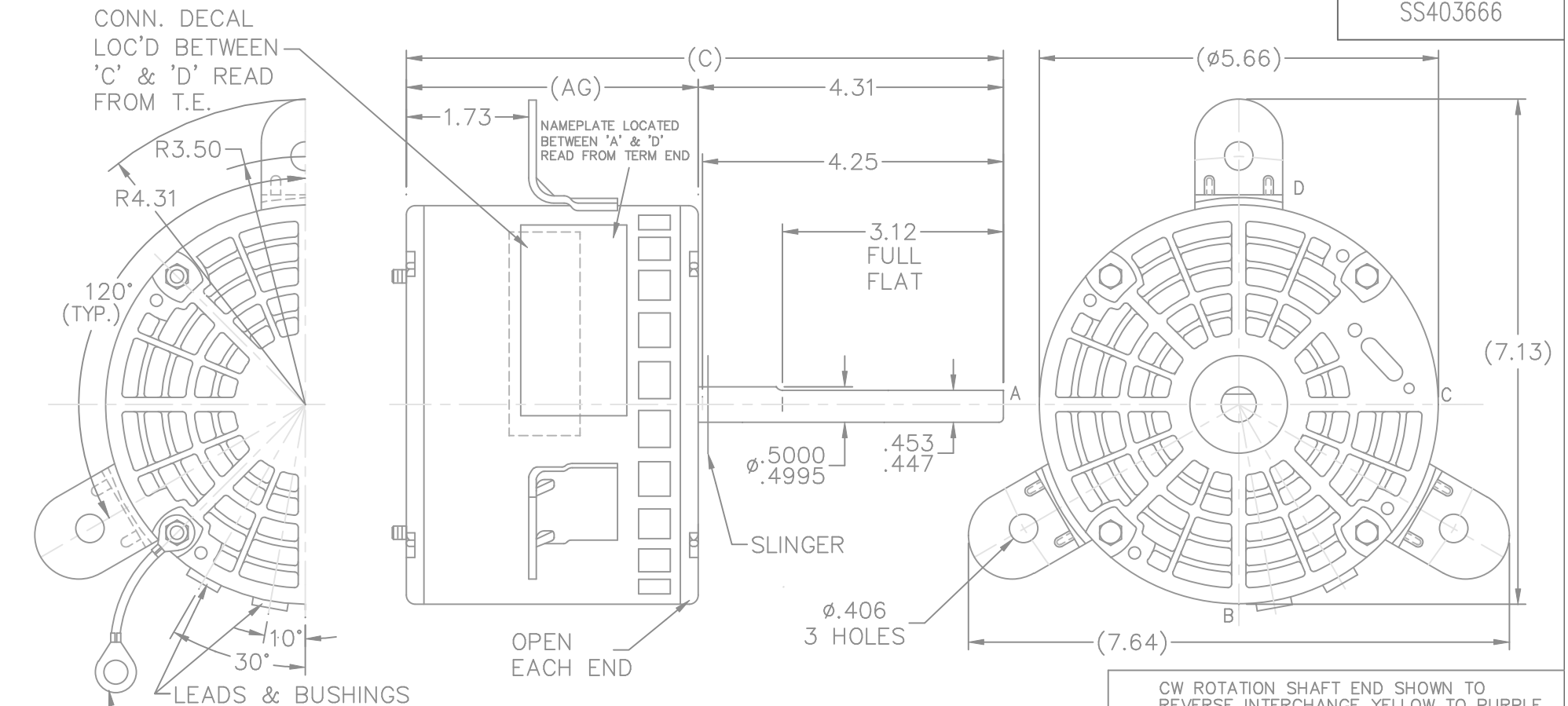
### Nameplate Specifications

Output HP	0.25 Hp	Output KW	0.19 kW
Frequency	60 Hz	Voltage	208-230 V
Current	2.0-2.2 A	Speed	1075 rpm
Service Factor	1	Phase	1
Efficiency	54.4 %	Power Factor	0
Duty	Continuous	Insulation Class	B
Design Code	NO DESIGN CODE	KVA Code	D
Frame	48Y	Enclosure	Open Air Over
Thermal Protection	Automatic Lock Rotor Only	Ambient Temperature	40 °C
Drive End Bearing Size	6203	Opp Drive End Bearing Size	6203
UL	Recognized	CSA	Y
CE	N	IP Code	10

### Technical Specifications

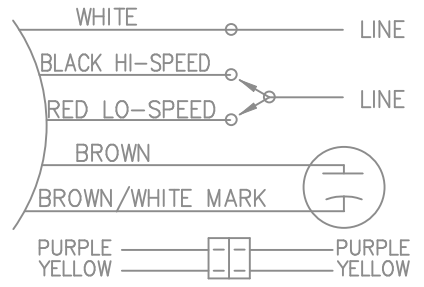
Electrical Type	Permanent Split Capacitor	Starting Method	Across The Line
Poles	6	Rotation	Selective Counterclockwise
Resistance Main	0 Ohms	Mounting	Three Lug Mount
Motor Orientation	Horizontal	Drive End Bearing	Ball
Opp Drive End Bearing	Ball	Frame Material	Rolled Steel
Shaft Type	Single Special Extension	Overall Length	8.44 in
Frame Length	3.62 in	Shaft Diameter	0.500 in
Shaft Extension	4.31 in	Assembly/Box Mounting	F1 ONLY
Connection Drawing	6906494	Outline Drawing	A-SS403666-362

This is an uncontrolled document once printed or downloaded and is subject to change without notice. Date Created:04/01/2021



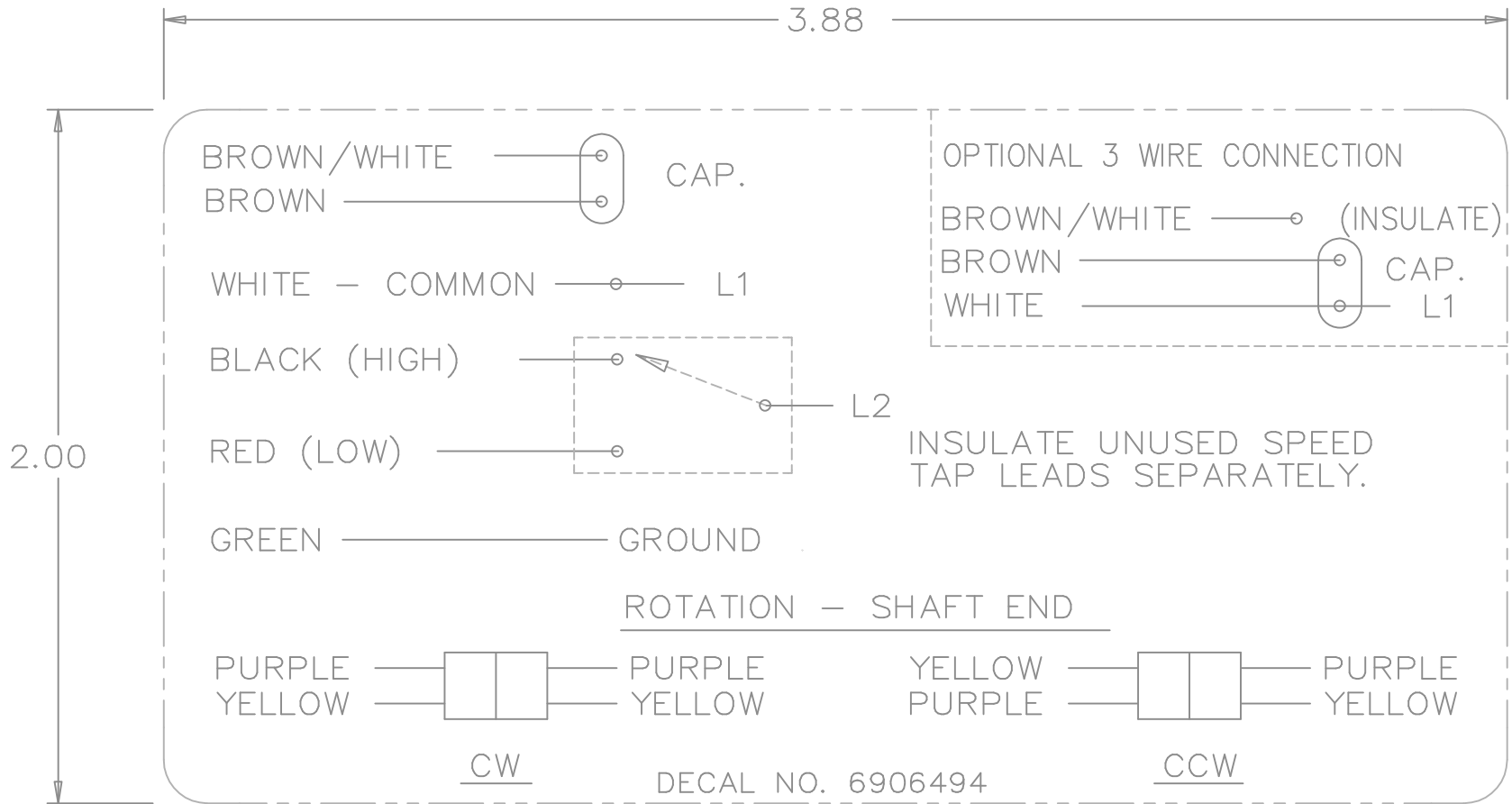
LEAD DESCRIPTION:  
 1 GREEN (GROUND) LEAD WITH TERM. FOR .25 SCREW. 58.00" LONG.  
 5 LEADS WITH .25 STRAIGHT-TYPE QUICK CONNECTS 58.00" LONG— WHITE, BLACK, RED, BROWN, AND BROWN WITH WHITE MARKER. REVERSING LEADS ARE MOLDED INTO MATING PULL APART PLUGS. ONE PURPLE AND ONE YELLOW LEAD PER PLUG. 5.00" LONG

CW ROTATION SHAFT END SHOWN TO REVERSE INTERCHANGE YELLOW TO PURPLE.



DASH	FRAME	C	AG
362	48	8.44	4.12

				TOLERANCES UNLESS SPECIFIED			DRAWN NB 12-14-2007							
				DEC.	INCHES		CHK VL 12-14-2007							
				.X	±.1		APPD VL 12-14-2007							
				.XX	±.03		SCALE 15=32							
				.XXX	±.005		REF SS73780							
				.XXXX	±.0005	TITLE	FMF 07-2838							
				ANG	±7'30"	MAT'L.	PREV							
NO.	REVISION			BY & DATE	CHK	FINISH								
THIS DRAWING IN DESIGN AND DETAIL IS OUR PROPERTY AND MUST NOT BE USED EXCEPT IN CONNECTION WITH OUR WORK ALL RIGHTS OF DESIGN AND INVENTION ARE RESERVED THIS IS AN ELECTRONICALLY GENERATED DOCUMENT - DO NOT SCALE THIS PRINT						RFP	12-14-2007	CAD FILE	ss403666	SIZE	DRAWING NO.	PAGE	OF	REV.
						DIST	WP			A	SS403666			



				TOLERANCES UNLESS SPECIFIED		REGAL-BELOIT <i>Motor Technologies</i>	DRAWN MRB 04-16-1998				
				DEC.	INCHES		CHK	ML	04-22-1998		
				.X	±.1		APPD	GK	04-22-1998		
3	REMOVED 'MARATHON ELECTRIC' CN 35106	DRS 05-01-2002	TOM	.XX	±.02	TITLE CONNECTION DECAL		SCALE 1=1			
2	PART NAME WAS CONNECTION DIAGRAM CN 25669	MRB 04-23-1998		.XXX	±.005	REF					
1	NEW DRAWING CN 25669	MRB 04-22-1998		.XXXX	±.0005	MAT'L.		FMF			
NO.	REVISION	BY & DATE	CHK	ANG	±7'30"	FINISH		PREV			
THIS DRAWING IN DESIGN AND DETAIL IS OUR PROPERTY AND MUST NOT BE USED EXCEPT IN CONNECTION WITH OUR WORK ALL RIGHTS OF DESIGN AND INVENTION ARE RESERVED THIS IS AN ELECTRONICALLY GENERATED DOCUMENT - DO NOT SCALE THIS PRINT				RFP	CAD FILE 6906494		SIZE	DRAWING NO.	PAGE	OF	REV.
				DIST	WP	A	6906494			3	

